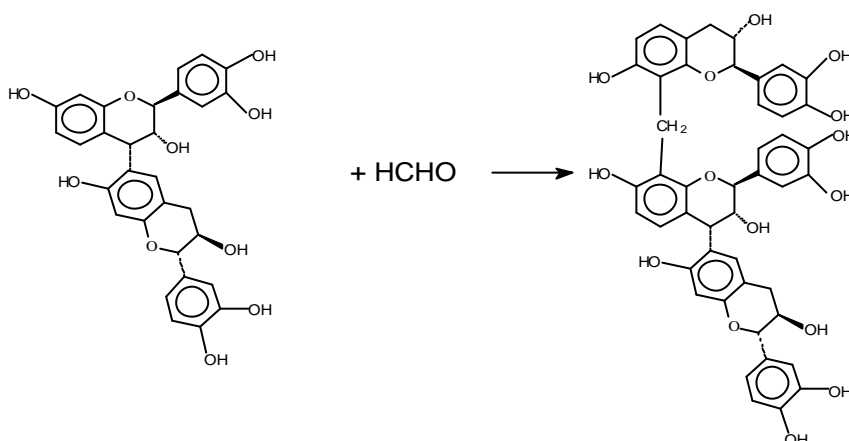


## PHENOTAN BS

**PHENOTAN BS** is a product developed from the wattle bark extract designed to be used in formulation for adhesives, specially indicated for plywood, particleboard and corrugated cardboard.

**PHENOTAN BS** gathers in its composition the main characteristics of an extract rich in polyphenolic structures. It polymerizes in reaction with cure agents as formaldehyde or paraformaldehyde, being an alternative for the vegetable adhesives.



**PHENOTAN BS** is supplied in a dark brown powder of acid and astringent characteristics. It is also available in a dedusted form making easier the handling, improving health and welfare conditions of the workers.

The use of **PHENOTAN BS**, as a fortifying agent of starch-based adhesives, might result in improvements on damp-proof properties during the manufacture of corrugated cardboard containers.



### Typical Analysis:

|  |           |
|--|-----------|
| pH (1% aq.soln.w/v)  | 4,0 - 5,0 |
| Moisture (%)   | 4,5 - 6,5 |
| Stiasny Number (%) (reactivity of polyphenolic structures toward formaldehyde) | 82 - 92   |

**PHENOTAN BS** is presented in a powder form, dedusted, and packed in a 25-kg bag net weight, offered in loose bags or in pallets.

- Maximum load: 19 t per 20' container, when palletised,
- Maximum load: 20 t per 20' container, when loose bags.

Revision: AB1005